

capsule pressure gauges DS 4", 6" (100-150mm)

MN9



For measurement of low pressure and vacuum within the range -600...0 to 0...600 mbar, for use on gas and dry air.

2.09.1 - Standard Model MN9 DS 4" (100mm)

- Design:** EN 837-3.
- Ranges:** from 0...10 to 0...240 INWC (from 0...25 to 0...600 mbar) or equivalent units.
- Accuracy class:** 1.6 as per EN 837.
- Ambient temperature:** -13...+149 °F (-25...+65 °C).
- Process fluid temperature:** +149°F (+65 °C).
- Working pressure:** max 75% of FSV.
- Over pressure limit:** 25% of FSV.
- Protection degree:** IP 55 as per IEC 529.
- Socket material:** stainless steel.
- Elastic element:** copper alloy capsule.
- Case:** stainless steel.
- Ring:** stainless steel, bayonet lock.
- Window:** glass.
- Movement:** copper alloy.
- Dial:** aluminium, white with black markings.
- Pointer:** aluminium.
- Zero adjustment:** internal, on dial.

0...2,5 mbar (1)
0...4 mbar (1)
0...6 mbar (1)
0...10 mbar (1)
0...16 mbar (1)
0...25 mbar
0...40 mbar
0...60 mbar
0...100 mbar
0...160 mbar
0...250 mbar
0...400 mbar
0...600 mbar

-1...1,5 mbar (1)
-1,5...1 mbar (1)
-1...3 mbar (1)
-2...2 mbar (1)
-3...1 mbar (1)
-2...4 mbar (1)
-4...2 mbar (1)
-3...3 mbar (1)
-4...6 mbar (1)
-6...4 mbar (1)
-5...5 mbar (1)
-6...10 mbar (1)
-10...6 mbar (1)
-10...15 mbar
-15...10 mbar
-15...25 mbar
-25...15 mbar
-20...40 mbar
-40...20 mbar
-40...60 mbar
-60...40 mbar
-60...100 mbar
-100...60 mbar
-100...150 mbar
-150...100 mbar
-150...250 mbar
-250...150 mbar
-200...400 mbar
-400...200 mbar

-2,5...0 mbar (1)
-4...0 mbar (1)
-6...0 mbar (1)
-10...0 mbar (1)
-16...0 mbar (1)
-25...0 mbar
-40...0 mbar
-60...0 mbar
-100...0 mbar
-160...0 mbar
-250...0 mbar
-400...0 mbar
-600...0 mbar

(1) for DS 6" (150mm)

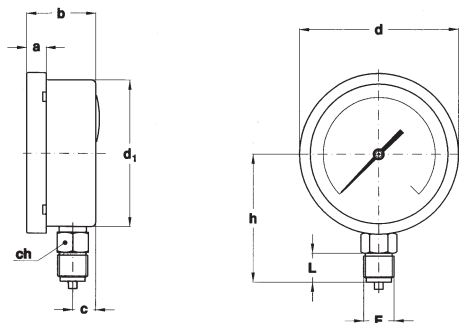
2.10.1 - "All stainless steel" Model MN9/18 DS 4", 6" (100-150mm)

- Ranges:** from 0...10 to 0...240 INWC (from 0...25 to 0...600 mbar) or equivalent units for DS 4" (100mm);
from 0...1 to 0...240 INWC (from 0...2,5 to 0...600 mbar) or equivalent units for DS 6" (150mm).
- Process fluid temperature:** +212 °F (+100 °C).
- Socket material:** AISI 316 st.st.
- Elastic element:** AISI 316 Ti (1.4571) st.st. capsule.
- Other features:** as MN9 DS 4" (100mm).

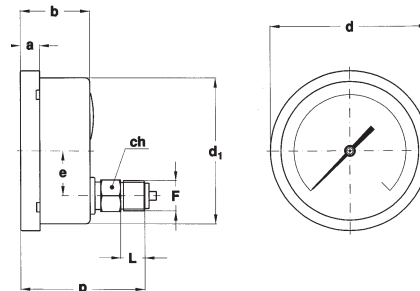
capsule pressure gauges
DS 4", 6" (100-150mm)

MN9

RBI.1 - 01 / 09



A - LOWER CONNECTION



D - BACK CONNECTION

Mounting	DN	F	a	b	c	d	d ₁	e	h	p	L	ch	Weight : lbs (kg)
Lower	E 4" (100mm)	41M G 1/2 A	0.51 (13)	1.91 (48,6)	0.63 (16,1)	4.35 (110,6)	3.97 (101)		3.39 (86)		0.78 (20)	0.87 (22)	1.14 (0,52)
Lower	G 6" (150mm)		0.59 (15)	1.96 (50,5)	0.65 (16,5)	6.33 (161)	5.88 (149,6)		3.39 (86)		0.78 (20)	0.87 (22)	2.20 (1)
Back	E 4" (100mm)	43M 1/2-14 NPT	0.51 (13)	1.91 (48,6)		4.35 (110,6)	3.97 (101)	1.22 (31)		3.42 (86,8)	0.78 (20)	0.87 (22)	1.25 (0,57)
Back	G 6" (150mm)		0.59 (15)	1.96 (50,5)		6.33 (161)	5.88 (149,6)	1.22 (31)		3.42 (86,8)	0.78 (20)	0.87 (22)	1.98 (0,9)

dimensions : mm

OPTIONS

MODEL	MN9	MN9/18
C40 - AISI 316 st. st. case and ring		♦
K10 - Accuracy class 1 (only for ≥ 25 mbar range)		♦
MIX -Stainless steel movement		♦
B - "U"-clamp, for back connection pressure gauges	♦	♦
C - Back flange, for lower connection pressure gauges	♦	♦
E - Front flange, for back connection pressure gauges	♦	♦
T32 - Window glass	♦	♦

"HOW TO ORDER" SEQUENCE

Section / Model / Case / Mounting / Diameter / Range / Process connection / Options

2 09 1 A E 41M B...E
10 D G 43M C40...T32

